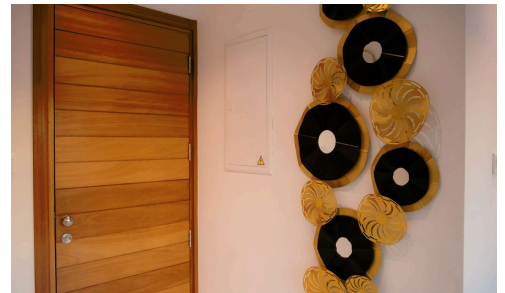
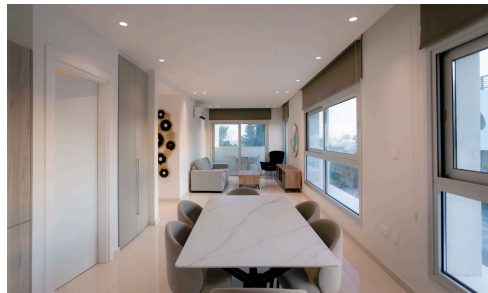
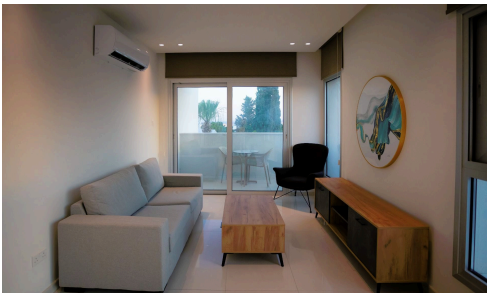


#17654



2 Bed 1st Floor Apartment In Germasogeia

€352,000 +VAT

📍 Germasogeia, Limassol

€391,000

This 2-bedroom apartment is housed in a small new-build block of only four 2-bedroom units in Germasogeia, one of the most desirable locations in Limassol. The quiet residential neighbourhood is only 2km from the nearest organized sandy beach. All everyday amenities from banks and supermarkets to shops and restaurants are less than 1km from the property. In addition, easy access to the highway makes it an ideal base for commuters or regular travellers, as it is midway between the two airports in Larnaca and Pafos, both around 50km away.

The space optimized layout has a very generous feel, with a master ensuite bedroom, and a second bedroom with family bathroom. The open-plan living and dining area is connected to the fully fitted and equipped kitchen.

Bedrooms

 2

Bathrooms

 2

Covered

 93 m²

